

SCHÜCO

ASE 60
Sliding Door

ROOMS
FLOODED
WITH LIGHT



UNIQUE GLASS
& G L A Z I N G

77 KD Tower, Cotterells
Hemel Hempstead
HP1 1AS

info@uniquegg.co.uk



UNIQUE GLASS
& G L A Z I N G





SCHÜCO

ASE 60 Sliding and Lift & Slide Door

The modular and scalable Schüco ASE 60 sliding and lift-and-slide system boasts excellent thermal insulation values, slimline face widths and comprehensive solutions in terms of design, openings and comfort.

Fittings allow for both Sliding and Lift & Slide

Low Threshold - Concealable

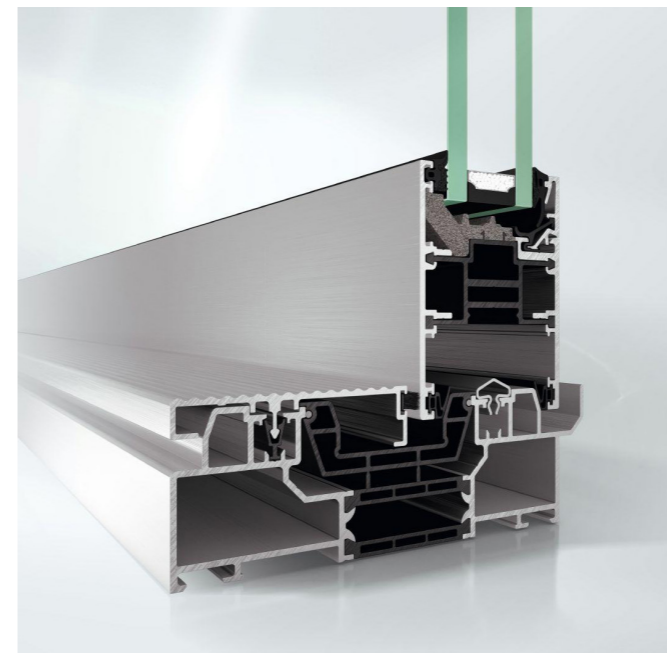
Variable sightlines for a wide range of sizes and applications: 40mm to 112mm

Single, Double or Triple Track

Certified Burglar Resistance

Over 200 industry RAL colours - Single or Dual

Schüco SmartStop & SmartClose Compatible (vent, wall-mounted & voice command technology)



Door Panel Size Limits

Maximum Width	3500mm
Maximum Height	3500mm
Maximum Weight	500KG

THRESHOLD HEIGHT	48 mm	
GLAZING THICKNESS	24 - 40 mm	
GLAZING METHOD	Beaded	
GLAZING	Double or Triple	
BURGLAR RESISTANCE	RC 2, DIN V ENV 1627	
SIGHTLINE (SLIM)	40 mm	
SIGHTLINE (STANDARD)	102 mm	
SIGHTLINE (HEAVY DUTY)	112 mm	
FRAME DEPTH	2 RAIL	140 mm
FRAME DEPTH	3 RAIL	220 mm

SCHÜCO

ASE 60 Sliding and Lift & Slide Door

Add a personal touch to the sliding doors.

Colours:

Choose from over 200 industry RAL colours. Select different colours outside and inside for the frame (dual frame colour). The polyester powdercoat paint is baked onto the aluminium to create a high quality, durable and tough finish to withstands the rigors of UK weather.

Finishes:

Choose from a wide range of surface treatments and anodised finishes (matt, gloss, semi gloss, anodised, textured) Subject to availability.

Handles Colours: Subject to availability.

- RAL 9005 Black
- RAL 9010 Pure White
- RAL 9016 Traffic White
- CO Silver Anodised

Handle Types:

- Handle with inside cylinder. Pull grip on the outside.
- Handle without inside cylinder. Pull grip on the outside.
- Handle with cylinder on both sides.

Glass Type Examples:

Low emission (standard), safety & security (toughened laminated), solar control, self-cleaning, acoustic, decorative, coloured.

PERFORMANCE	
U-VALUE	From 1.1 W/m²K
AIR PERMEABILITY	Class 4, EN 12207
WATER TIGHTNESS	Class E 900, EN 12208
WIND RESISTANCE	Class C5/B5